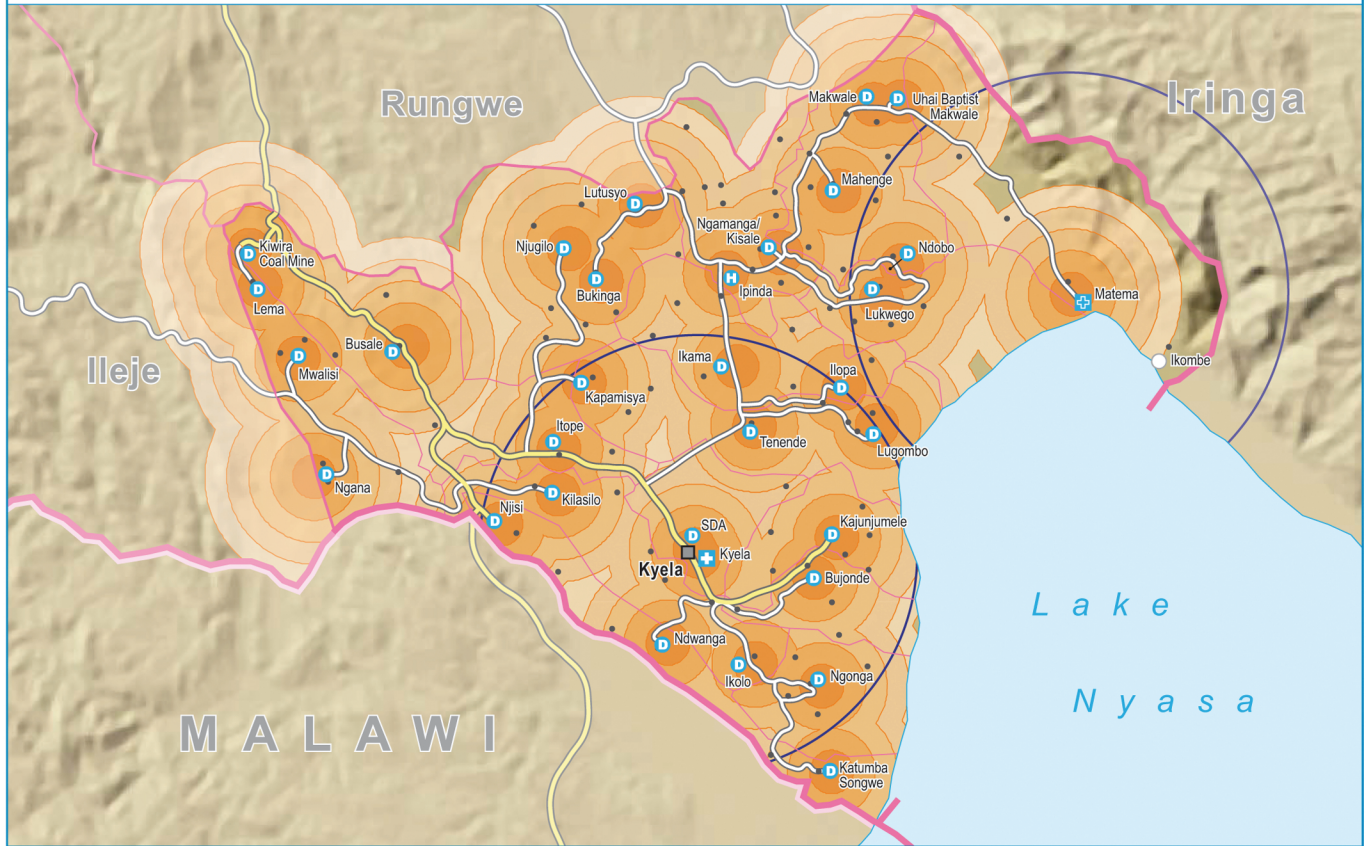


ACCESSIBILITY

4 | Kyela

1:350000 0 5 km



Accessibility of health facilities / Upatikanaji vituo vya afya

Distance to health facility/
Umbali wa vituo vya afya
(Health Centre, Dispensary)
(Kituo cha afya, zahanati)



Distance to hospital/
Umbali wa hospitali

— 10 km

Health facilities / Vituo vya afya

- District hospital / Hospitali ya wilaya
- Other hospital / Hospitali nyinginezo
- Specialized clinic / Klinki zenye utaalamu
- Health centre / Kituo cha afya
- Dispensary / Zahanati
- No function (under construction, closed)
Halfanyi kazi (Inajengwa, Imefungwa)
- No data (not able to interview, no answer)
Hakuna takwimu (Hatukuweza kuwahoji, Hakuna majibu)

Traffic and settlement / Aina ya barabara na Makazi

- Tarmac road / Barabara ya lami
- Rough road / Barabara isiyo na lami
- Seasonal road / Barabara za msimu
- Road under construction /
Barabara inajengwa
- Town / Mji
- Village centre / Kijiji
- Village point / Kijiji

Boundaries / Mipaka

- National / Taifa
- Region / Mkoa
- District / Wilaya
- Ward / Kata

Example:



In this case the village can access the dispensary at 5 km.

Kijiji kipo umbali wa kilomita 5 kufikia zahanati.